



# CORRECTION SHEET



# Correction Sheet

## Exercise A1: Tap the Sap

1. Subjective
2. Subjective
3. The sap flow
4. Around 40 years old
5. March / Spring

## Exercise A2: Find the Right Word!

First Nations people / time / bark / sap / coureurs  
des bois / bannock / athletes / champion

## Exercise A3: Flora or Fauna?

### Fauna:

Moles, wood frogs, red-backed salamanders, mice, chipmunks, hares, partridges, raccoons, skunks, foxes, coyotes, bears, deer, woodpeckers, northern flickers, black-capped chickadees, wood thrushes, owls, eagle owls, squirrels, porcupines.

### Flora:

Sugar maple tree, ramp or wild garlic, ginseng and trillium.

## Exercise A4: True or False?

True / False / True / False / True / False

## Exercise A5: 1, 2, 3, 4 saisons!

Winter: Shh! Did you see fox and deer tracks in the snow?

Spring: Yum! Maple sugar time has finally come!

Summer: It's sunny! The entire sugar bush grows and matures with the help of heat and water.

Fall: Nature slows down and offers a festival of colours: red, yellow and orange.

## Exercise A6: Who Does What?

Ariane Lavigne: Olympic snowboarder

Hugo Houle: Cyclist

Jacques Cartier: Explorer

Brother Marie-Victorin: Botanist

## Exercise A7: Time to Rhyme!

tap - sap / butter - woodpecker /

tree - chickadee / sugar shack - lumberjack

/ maple - staple

## Exercise A8: Does it Add Up?

8

## Exercise A9: How does it Sound?

I hear [s]

• syrup

• abscess

• sap

• base

I hear [z]

• infusions

• energizing

• virtues

I hear [k]

• Quebecer

• bark

## Exercise A10: When does it Happen?

In the springtime / beginning / days  
/ nights / starting / Once

## Exercise A11: Brainstorming Session

1. Helps flowers and plants grow
2. An animal that lives underground
3. Produces oxygen
4. Rare plants
5. The soil formed by decomposing plants

## Exercise A12: Figure It Out!

1491

## Exercise A13: Put Things in Perspective!

1. In front of

2. On

3. In the middle of

4. In

5. Behind

6. To the left of

## Exercise A14: Find the characters

1. Squirrel

2. Drop of syrup in C,5

3. Sugar Fairy

4. A,1

5. D,3

## Exercise A15: True or False?

1. True 2. False 3. False 4. False 5. False

## Exercise A16: Is It Flowing?

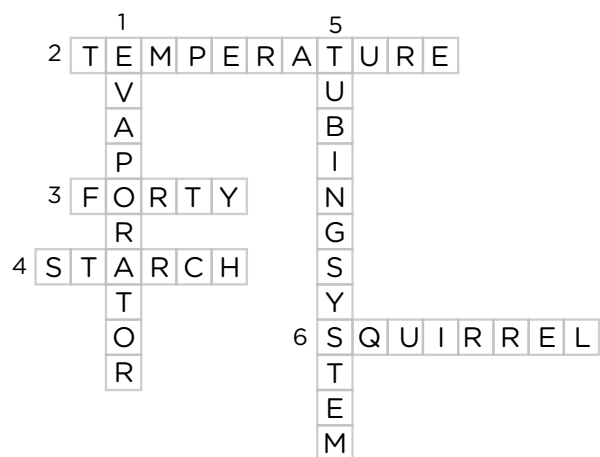
Tuesday, Wednesday, Thursday.

# Correction Sheet

## Exercise B1: Tap the Sap

1. Subjective
2. Subjective
3. Sap flow
4. Around 40 years old
5. *Common noun*: water, evaporator, vitamins, spring (or verb), syrup, starch (or verb), tree, alternate (or verb or adjective)  
*Verb*: wakens, wait, collected, alternate (or noun or adjective), spring (or noun)  
*Adjective*: tiny, healthy, smooth, warm, alternate (or noun or verb)

## Exercise B2: Supercool Crossword



## Exercise B3: Unscramble the Letters

champion / athletes / bannock  
/ performance / *coureurs*

## Exercise B4: Flora or Fauna?

Fauna: mole, red-backed salamander, raccoon, owl, chipmunk, black-capped chickadee  
Flora: ginseng, ramp (or wild garlic), trillium

## Exercise B5: A Capital Case

According to **B**rother **M**arie-**V**ictorin, the celebrated botanist who founded the Montreal **B**otanical **G**arden, a squirrel led to the discovery of maple sap's power. Since **F**irst **N**ations people passed on their knowledge orally, it is impossible to say if the story is true or if it is simply a legend. **D**id you know that **J**acques **C**artier not only discovered **C**anada but that he is also the first **E**uropean to have written about maple?

## Exercise B6: Who am I?

Notch / Tap [or Spile] / Bucket / Tubing  
/ Evaporator / Snowshoes

## Exercise B7: The Mystery Creature



**Raccoon**  
I have a black mask,  
but I am not a thief...



**Wood frog**  
My cousins live in the water,  
but I prefer the woods.



**Eagle owl**  
I am one of the largest owls  
in the sugar bush.



**Hare**  
Unlike the rabbit, I don't dig  
a burrow.



**Skunk**  
Don't come too close to me!



**Northern flicker [or woodpecker]**  
Maple trees don't like my beak!

## Exercise B8: The Secret is in the Code

0567

## Exercise B9: History in Figures

1557 | 1850 | 1861 | 1920

## Exercise B10: Ready, Set, Colour!

Child drawings

## Exercise B11: Friends or Enemies?

first / bitter / celebrated / earliest / hard  
/ sweet / without / orally / certain [or sure]

## Exercise B12: How Does it Sound?

I hear [s]	I hear [z]	I hear [k]
• calcium	• visits	• bark
• essential	• magnesium	• bannock
• joyous	• virtues	• coureurs

**Exercise B13: Would YOU be a Good Maple Producer?**

Wood—leads to the suffix—pecker  
(answer: woodpecker)

Garden—leads to the suffix—er  
(answer: gardener)

Astro—leads to the suffix—naut  
(answer: astronaut)

Tele—leads to the suffix—vision  
(answer: television)

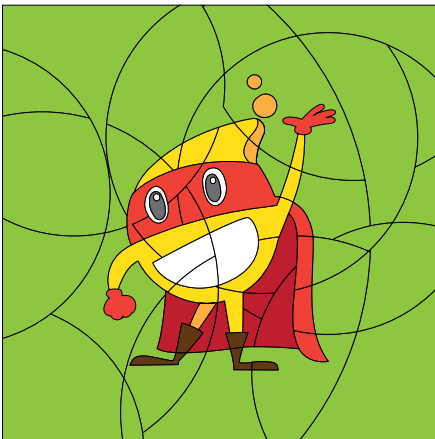
Safe—leads to the suffix—ty  
(answer: safety)

**Exercise B14: Participate by Colouring Participles**

snowboarding / qualifying / uniting / imagining  
/ revealing / reaching / eating / living

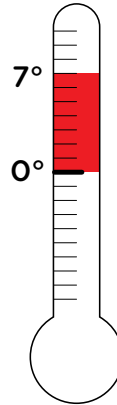
Answer: squirrel

**Exercise B15: Search Me!**

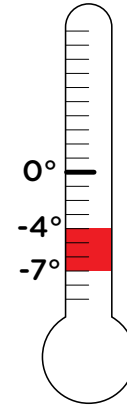


**Exercise B16: Weather Gone Nuts!**

**MINIMAL VARIATION**  
DAYTIME TEMPERATURE



**MAXIMUM VARIATION**  
NIGHTTIME TEMPERATURE



Thermometer 1: variation of 0 to 7  
Thermometer 2: variation of -7 to -4

**Exercise B17: Order, Please!**

1. The sugar bush shelters a large variety of plants.
2. The sugar bush is full of life!
3. Trees are born, they grow and they die.
4. Such is the cycle of life...
5. Did you know that the sugar bush is an ecosystem?
6. The Earth and all living things need oxygen.
7. The sugar bush looks like a beautiful garden that smells good.

**Exercise B18: Of Animals and the Alphabet**

Frog / salamander / chipmunk / hare  
/ partridge / coyote

Réponse: animals of sugar bush

